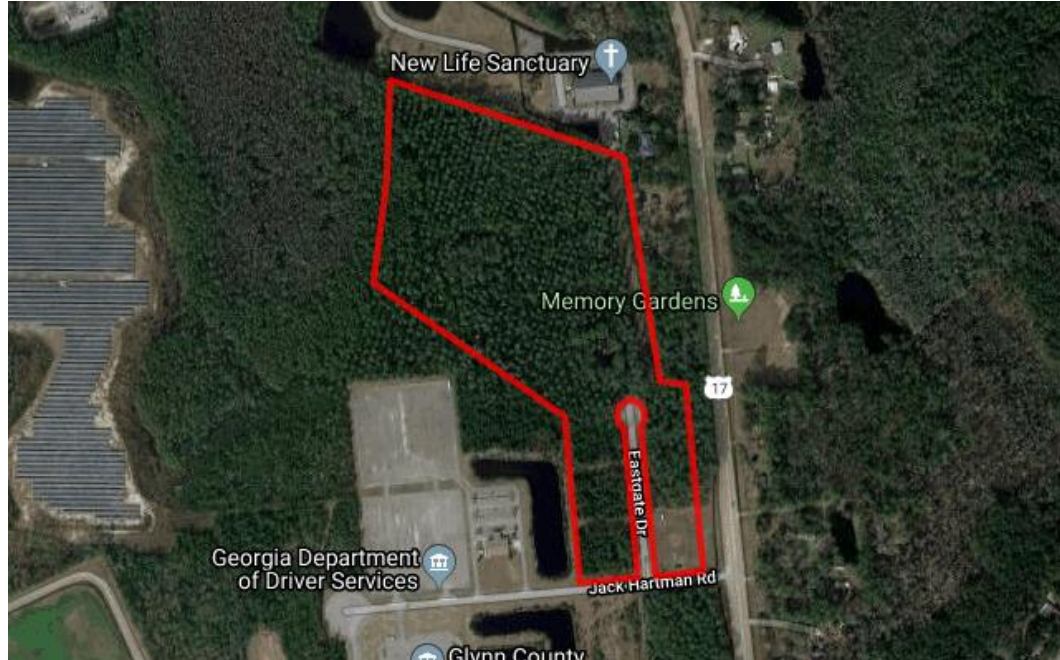
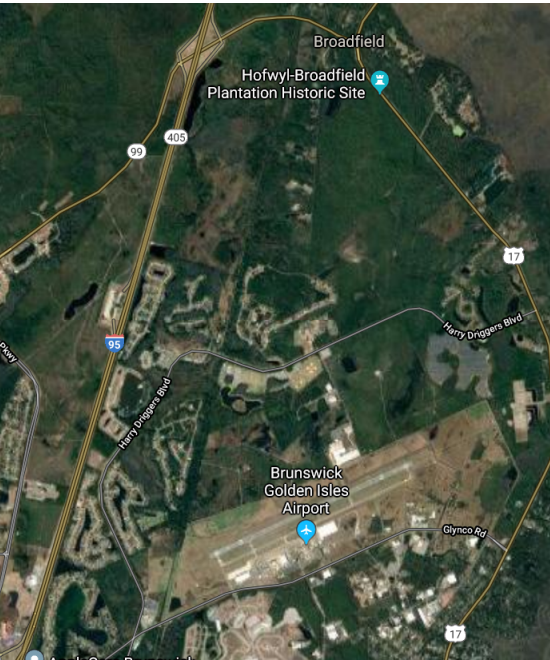


East Gate Commerce Park

Eastgate Drive

Brunswick, GA 31525



FEATURES

- 30 total acres
- Smallest tract: 1 acre
- Largest tract: 24 acres
- Zoned PD-G; Lite Industrial
- All utilities on site
- Water and Sewer extend into the park to the cul de sac

The park's current tenants include: GA Department of Motor Services and Mayor Construction

OVERVIEW

East Gate Commerce Park features 30 acres of shovel ready opportunity. Strategically located east of the Brunswick Golden Isles Airport and directly adjacent to US Highway 17. East Gate Commerce Park is a high profile location for commercial and industrial businesses that require smaller parcels. The industrial park is perfect for new business that prefer a planned and restricted-use industrial park setting. The park is less than 3 miles from access to Interstate 95.

The property is owned and managed by the Development Authority. Competitive land pricing and additional incentives available for projects within our targeted industries- Aerospace, Manufacturing, and Logistics.

EASTGATE COMMERCE PARK
PHASE 1,
A PORTION OF TRACT ODI-2



NOW OR FORMERLY
GLYNN COUNTY BOARD OF EDUCATION

NOW OR FORMERLY
CDL FACILITY

NOW OR FORMERLY
BRUNSWICK AND GLYNN COUNTY
DEVELOPMENT AUTHORITY

OWNERSHIP INFORMATION
NOT AVAILABLE

JACK HARTMAN BOULEVARD (70' R/W)

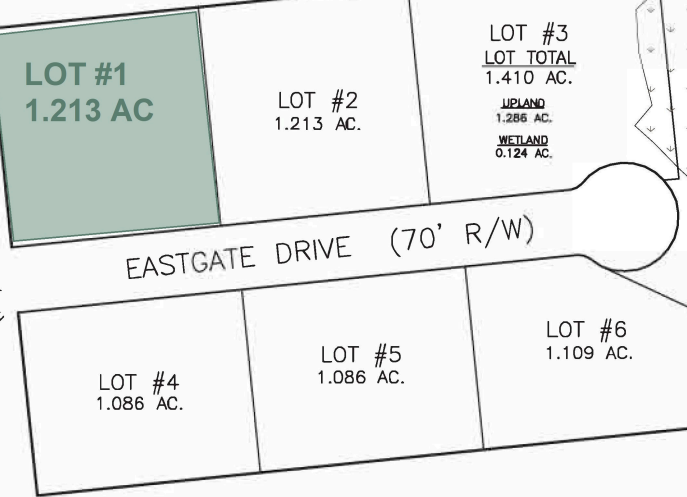
NOW OR FORMERLY
BRUNSWICK AND GLYNN COUNTY
DEVELOPMENT AUTHORITY

NOW OR FORMERLY
NORTH GLYNN UNITED
METHODIST CHURCH, INC.

NOW OR
FORMERLY
JAMES POLITE

NOW OR FORMERLY
WILLIAM GRANT

NOW OR FORMERLY
ELNORA AUSTIN



LOT #7
LOT TOTAL
24.179 AC.
UPLAND
13.117 AC.
WETLAND
11.062 AC.

ACREAGE CHART

LOTS	31.296 AC.
LOT 1	1.213 AC.
LOT 2	1.213 AC.
LOT 3	1.410 AC.
LOT 4	1.086 AC.
LOT 5	1.086 AC.
LOT 6	1.109 AC.
LOT 7	24.179 AC.
RIGHT OF WAY	1.208 AC.
TOTAL	32.504 AC.




U.S. HWY 17 (200' R/W)



PREPARED FOR:
BRUNSWICK AND GLYNN COUNTY DEVELOPMENT AUTHORITY
EASTGATE COMMERCE PARK, PHASE 1, GLYNN COUNTY, GEORGIA

DATE: 9/1/10 SCALE: 1" = 300' JOB # 09085D

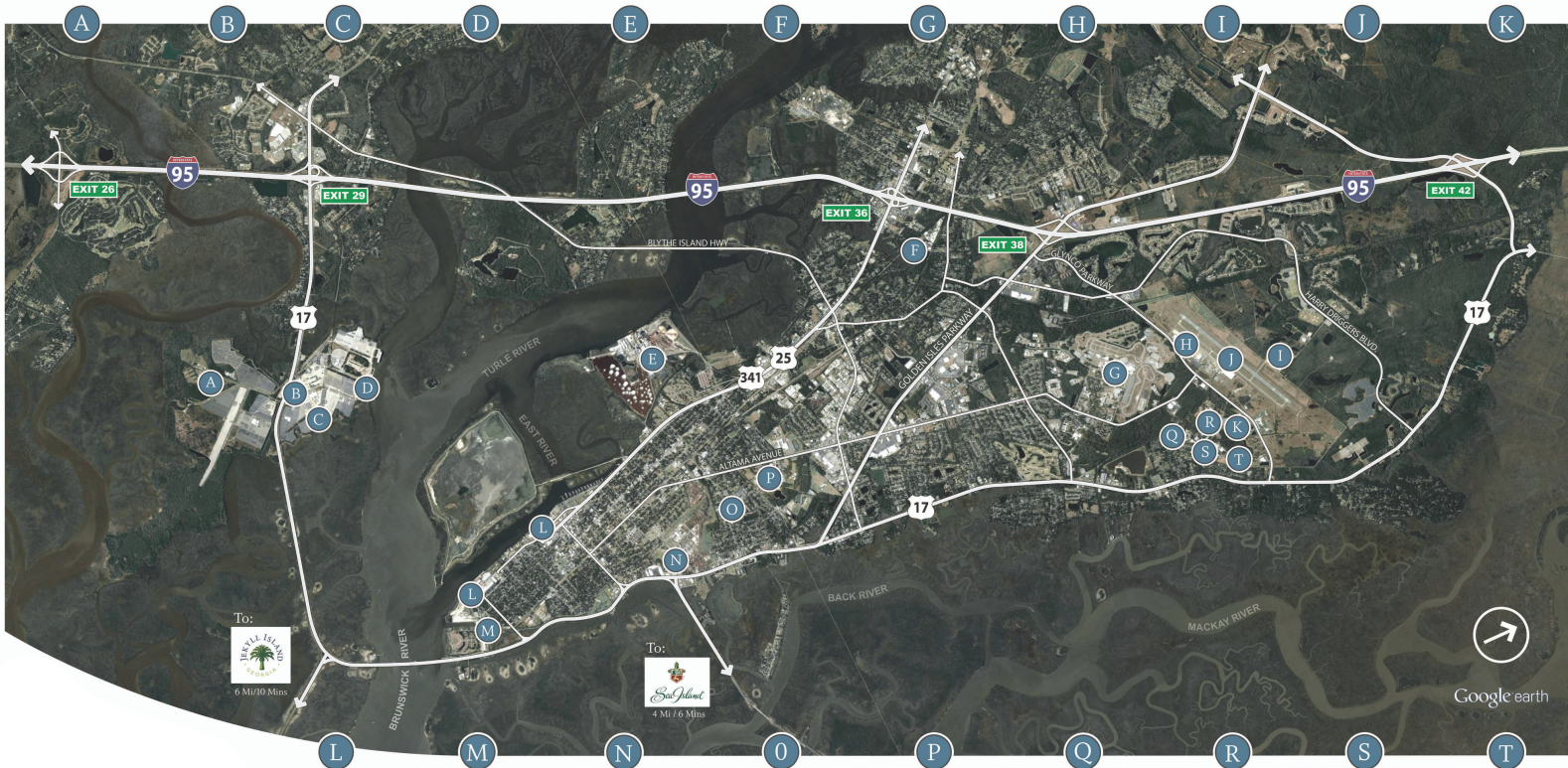
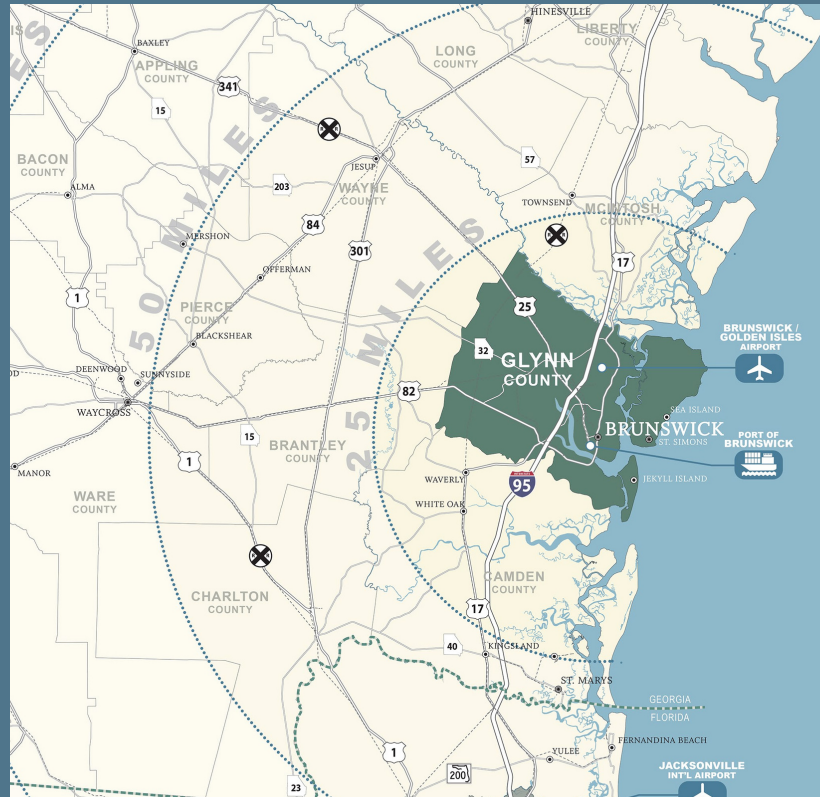
 **SUPE SURVEYING COMPANY, P.C.**
3837 DARIEN HWY.
BRUNSWICK, GEORGIA 31525
912-265-0562 09085D-2.DWG

About the Golden Isles

Midway between Savannah, Georgia, and Jacksonville, Florida the Golden Isles of Glynn County include St. Simons Island, Jekyll Island, Sea Island, Little St. Simons Island & the mainland city of Brunswick.

Industries thriving on the Coast:

- Aerospace
- Metals, Machinery, and Chemical Manufacturing
- Food Production and Processing
- Logistics and Distribution



www.georgiasgoldenopportunity.com

(912) 265-6629 | 1505 Richmond Street, 2nd Floor, Brunswick, GA 31520